



Emsworth Maritime & Historical Trust NEWSLETTER

President: The Rt Hon. Lord Willetts of Havant

Reg. Charity No. 1204910

Emsworth Museum

10b North Street, Emsworth, Hants, PO10 7DD

Tel: 01243 378091 www.emsworthmuseum.org.uk

May 2024

Helen, HM The Queen and the Maundy Money

Congratulations to Helen Hockey, Emsworth Museum steward and one of the recipients of this year's Royal Maundy gift of coins. Helen is organist at St James' Church and has been a church organist for more than 50 years, officiating at weddings and funerals as well as regular church services. She and her friend, Chris, travelled to Worcester Cathedral for this year's Maundy Thursday Service on 28th March.



Atrocious weather outside did not diminish the welcome received inside the Cathedral by Helen as she took her seat in the South aisle. The distribution of alms and the washing of the feet on the Thursday of Holy Week are acts of great antiquity. The Royal Maundy can be traced back in England with certainty to the 13th century. From the 15th century, the number of recipients has been related to the years of

Helen was one of 75 men and 75 women chosen from around the United Kingdom to receive a monetary gift from Her Majesty The Queen on behalf of His Majesty The King. Maundy money is presented in recognition of exemplary Christian service to church and community over many years. Helen started learning to play the organ while at Sherborne School for Girls. She honed her craft in Yeovil before spending over 20 years as organist at Rowlands Castle followed by 30 years in Emsworth. She has played locally in various churches and for different denominations.

the Sovereign's life. The gift is in two parts. The red pouch contains a nominal amount for clothing and provisions. This year it was a £5 coin (pictured above) with the Tudor dragon emblazoned on it as well as a 50 pence RNLi token to mark the 200th anniversary of the lifeboat institution. The white purse contains silver pennies, twopences, threepences and fourpences – as many pennies as His Majesty King Charles has years of age. All are legal tender. The washing of feet was discontinued in 1730 but the Lord High Almoner and his assistants still carry linen towels in remembrance. The alms are carried on medieval platters by Yeoman of the Guard.

HM King Charles III was not present in person for medical reasons. He video recorded the First Lesson which was taken from the Gospel according to John, 13 vv1-15. He also addressed the congregation.

Helen is not the only Emsworthian to be honoured for their Christian service to both church and community. Two years ago, Emsworth Maritime & Historical Trust member The Reverend Barbara Hammond was presented with her Maundy gift at the Chapel Royal in Windsor by the then Prince



The Reverend Barbara Hammond (right) with her daughter was presented with the Royal Maundy gift in 2022

Continued on page 4

Diary Dates

Walks £5.00 per person. Walks + Museum visit outside opening hours £6.00 per person

May 11th – 19th	continuation of Exhibition “Brook Meadow” by Colin Brotherston
May 25th – June 30th	Exhibition “100 years of Faithful Service. Two Churches – One Parish” by a team led by Gordon Braddock
Wed, June 5th	Summer Evening Walk led by Nigel Brown
Wed, June 26th	Treasure Hunt around Emsworth
Wed, July 3rd	Summer Evening Walk led by Nigel Brown
July 6th – Aug 18th	Exhibition “80th Anniversary of D-Day” by Jane Kidd
Wed, August 7th	Summer Evening Walk led by Nigel Brown
Aug 23rd – 26th	Exhibition “Visual Marks” by Elizabeth Saunders and friends
Aug 30th – Oct 27th	Exhibition “Emsworth Fire Brigade” by Trevor Davies
October 27th	Museum Closes

Dorothy Bone 01243 373780, email: doroxybone@btinternet.com

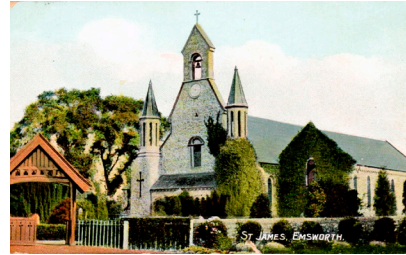
**Emsworth Museum opening times are Saturdays, Bank Holidays and Fridays in August
10.30am to 4.30pm, Sundays 1.30pm to 4.30pm**

Preview of Exhibitions

100 years of Faithful Service. Two Churches – One Parish

This exhibition of photographs, documents and maps of Emsworth from the 1920s celebrates the uniting of the two parishes. It aims to present a snapshot of local life a hundred years ago – revealing some remarkable similarities between then and now as well as many changes.

A timeline will feature local events and visits by well-known personalities. The achievements of the two rectors and memories of various baptisms, weddings and funerals are included. Some of the mysterious workings of the Church of England and what is happening now in our historic churches will be revealed.



St James' Church, Emsworth



Warblington Church of St Thomas à Becket. Oil painting by Wickham Smith

80th Anniversary of D-Day

June 6th is the 80th anniversary of the Allied landings on the beaches of Normandy. This exhibition will reflect on the lead up to D-Day and the impact this had on the local area and the residents of Emsworth.

It is hard to comprehend the complexity of planning an event of this magnitude and co-ordinating resources from a number of different nations whilst at the same time maintaining absolute secrecy. In Emsworth in the weeks leading up to the landings there were Canadian, Free French and British troops camped in the surrounding woods and movement by the local population was strictly controlled with check points to pass in and out of the area.

This display includes material from Emsworth residents who participated in the landings – some of it dates back to 2014 when the 70th anniversary was commemorated by an exhibition in the Museum.

Annual General Meeting



Some members of the AGM audience

The 49th Annual General Meeting of The Emsworth Maritime & Historical Trust was held in the Community Centre on Thursday, 14th March 2024.

James Melrose was re-elected as Treasurer. Gordon Braddock and Membership Secretary Shelagh Standen were re-elected to the committee. The appointment of Cllr Richard Kennett as Havant Borough Council's representative was ratified as was the re-appointment of Richard McMillan as independent examiner of the Trust accounts.

The 2023 accounts for the unincorporated charity of the Trust were approved with one abstention. The new constitution of the CIO (Charitable Incorporated Organisation) came into being at one minute after midnight on 1st January 2024. Chairman, Trevor Davies, thanked all members for their support in making this change and he particularly mentioned the Treasurer James Melrose. Thanks to his expertise, no legal fees had been incurred, new bank accounts have been set up and Stripe payments on Membermojo have proved easy and quick to use.

Trevor Davies encouraged all members to look at the updated Emsworth Museum website. Trevor Smith and his team have made significant changes to the site having already made available to the public over half of the photographic collection and all of the oral history tapes.

A lot of work has been done to renovate both the interior and exterior of 10b North Street. Trevor Davies itemised some of the changes and thanked Tony Stimson for all his efforts to make the building a safe and secure place. A volunteer is needed to replace Tony Stimson who latterly has been responsible for safety, maintenance and liaison with Museum landlord's Havant Borough Council.

There is one outstanding major renovation required in the building. The floor covering on the stairs

cannot be replaced without moving the stairlift. The stairlift is over 20 years old. While still working well, the manufacturers cannot guarantee that it will continue to work well should it be raised while the floor covering on the staircase is replaced. Replacing the stairlift and the floor covering together will be expensive.

In his report, Museum Curator Phil Magrath highlighted the work done on collections management, outreach activities and storage solutions. He added that he hoped to commence a Collections Audit. Such an audit involves looking at all artefacts given or donated from day 1 to see where they are located and if they are recorded accurately.



Minute Secretary, Sue Soames with Treasurer, James Melrose

D-Day Stories Wanted

In July and August, Emsworth Museum will be holding an exhibition commemorating the 80th Anniversary of the D-Day landings and how they affected local residents. Our aim is to include as many first-hand accounts from Emsworth residents as possible. A number of interviews with residents who were either living here at the time or who participated in the landings were recorded back in 2014 for the 70th Anniversary Exhibition.

However, we still want to capture and incorporate more personal stories and would therefore like to talk to:

- Local residents who were in the area in the months prior to and on D-Day itself
- Veterans who took part in the landings or the preparation for them
- Relatives of those involved who have records or memorabilia relating to the time
- Anyone who has knowledge of the work in the shipyards and the conditions in the harbour.

If you or anyone you know can help, please contact **Jane Kidd** on 01243 374839 or emsddaymemories@gmail.com.

From the Chairman



First, I must thank everyone for their support at the Annual General Meeting in March 2024. Thirty four members attended the meeting and 66 voted by post. There were 9 members who voted by post and then found they were able to attend the meeting. We made sure that we did not count them twice. It was a miserable evening outside, so, it was good that so many members were able to come. In total 91 members were able to participate in the AGM decisions – a total of which we should all be proud.

Museum Opening

As you know, the Museum opened on Good Friday – an unusual March opening because Easter was relatively early this year. The first temporary exhibition was about Brook Meadow. It demonstrated the scope of the wildlife images the Brook Meadow team have accumulated over the years. These images are also shown as an excellent slide show running continuously on the Research Room screen.

Although we did not have a formal opening, our President, David Willetts was one of the first visitors for the 2024 season – as reported elsewhere in the newsletter. Colin Brotherston, Chairman of Brook Meadow, showed him round the exhibition. It was of particular interest to Lord Willetts because the group was constituted when he was our local Member of Parliament.

Over the Easter weekend, we had almost 200 visitors, including 20 children. They donated £120 and spent £130 in the shop. The feedback on the new decorations has been almost universally positive. A number of stewards have commented that visitors are taking longer to walk up the stairs because they are spending more time studying the displays.

I am deeply grateful to Peter Munday who put up the new signs in the rain on the Thursday before Easter because he knew we wanted them up before we opened at 10.30am on Good Friday morning. It was worth his effort because the Ellie Cross designs look terrific. You will have noticed that we have extended the theme onto the new shopping bags, the posters and the badges we give to children who complete the quiz.

Volunteering

The committee are grateful to all our volunteers, but I make no apologies for repeating in the next column one of the slides I used during my AGM report. We can find volunteers by approaching those we know, but it is so much better to have as wide a pool of volunteers as possible. So, don't be shy – put your hand up and contact me.

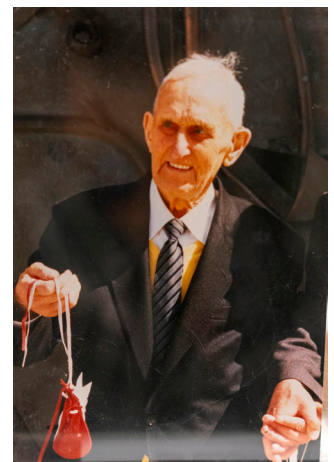
Trevor Davies, email trevor.davies28@btinternet.com

Volunteers needed to

- **Edit the *Emsworth Echo* and the Newsletter after November 2025. An apprenticeship period before Christine Bury retires would be desirable.**
- **Mastermind distribution of the *Emsworth Echo* and the Newsletter.**
- **Look after the Research Room.**
- **Research requests from the public – and our own queries.**
- **Support the continuing effort to make more information and exhibits available online.**
- **Tackle our (currently tiny) presence on social media.**
- **Look after the housekeeping – cleaning materials, toilet paper etc.**

Helen, HM The Queen and the Maundy Money contd.

Charles. Twenty six years ago, Alfred Herbert Martin received his Maundy coins from Her Majesty Queen Elizabeth II at Portsmouth Cathedral. Following that memorable day he made an oral history tape for Emsworth Museum which is available on the Museum website, www.emsworthmuseum.org.uk. Memorabilia from the presentation can be found in the Museum Research Room.



Alfred Herbert Martin holding the red and white pouches that were presented to him in 1998



Brook Meadow Exhibition

EMHT President The Rt Hon Lord Willetts of Havant visited Emsworth Museum on Good Friday to celebrate the opening of Emsworth Museum for the 2024 season and to view the latest temporary exhibition in the David Rudkin Room. Colin Brotherston, Chairman of the Brook Meadow Conservation Group and curator of this local nature reserve exhibition was delighted to meet Lord Willetts, a long-term supporter of the group's aims.



Colin Brotherston, foreground, with Lord Willetts

Colin showed Lord Willetts the work that has been done in recent years to restore, protect and conserve the natural habitat of Brook Meadow and its wildlife.

The second tranche of the Brook Meadow exhibition can be seen on 11/12th May and 18/19th May.

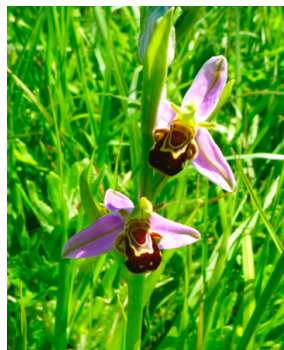
The conservation group was formed in 2000 and local residents meet regularly twice a month to maintain the ten and a half acre site with its grasslands, woodlands and rare chalk streams. Last year some 60 species of birds were recorded in Brook Meadow. There are 68 varieties of trees

and shrubs while an amazing number of insects can be spotted including butterflies, bees, beetles, damsel and dragon flies, together with reptiles and mammals such as the in-decline water vole which was seen again in 2023.

Members hold group events and welcome the involvement of local children. Work by the pupils of Emsworth Primary School is on display. There are guides, in-depth analyses of work and beautiful pictures showing the variety of wildlife that has been photographed within the meadow. The first tranche of the exhibition ran from 29th March to 21st April. On the opening Easter weekend 177 adults and 20 children were able to find out more about Emsworth's nature reserve that is situated right in the heart of the town.

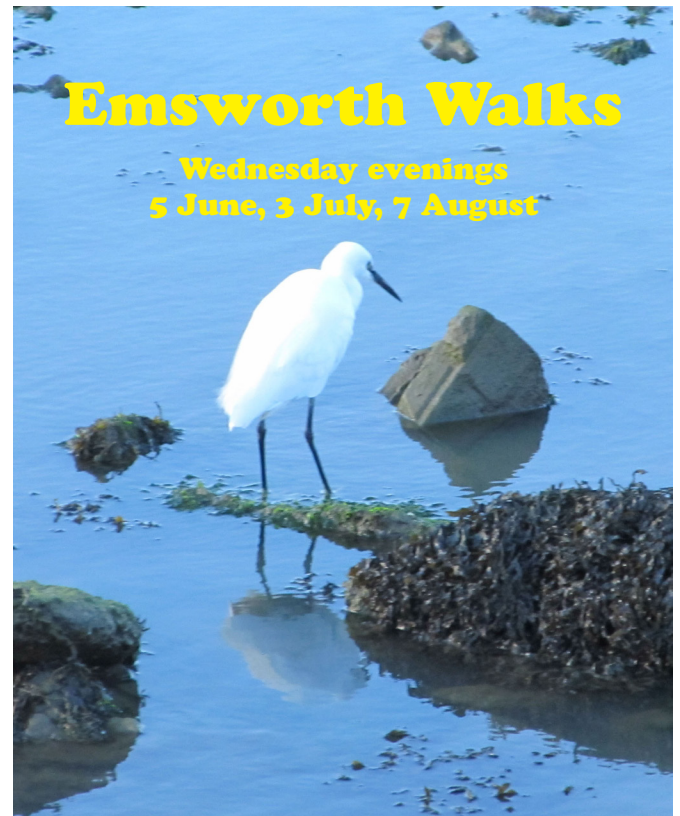
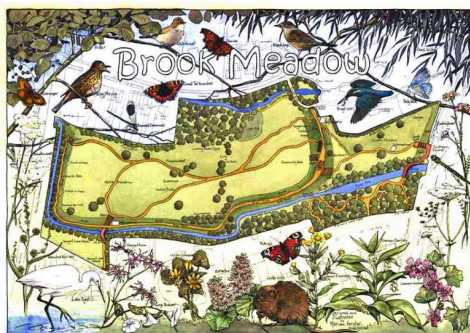


Gatekeeper Butterfly and Bee Orchid



Water vole
Photo: Paul Martin

This painting by local artist Marian Forster, commissioned by the conservation group, now hangs in the Museum



Emsworth Walks

Wednesday evenings
5 June, 3 July, 7 August

Each walk will start and finish at Emsworth Museum, 10b North Street and take about 1½ hours starting at 6.15 pm.

Please email walks@emsworthmuseum.org.uk to book a place. The cost is £5 per person, payable on the night. Numbers will be limited to 12.

The CT Scanner

The Beatles Greatest Gift to Mankind?



Ben Timmis

On a rainy evening at the beginning of February, an audience gathered for a fascinating talk by local resident and consultant radiologist, Dr Ben Timmis. His topic was the development of the CT scanner, its impact on medical diagnosis and the 'involvement' of the Beatles.

Beatles music was playing as the audience settled down in the Mountford Rooms of Emsworth Community Centre for the first of the 2024 spring talks. Foot and finger tapping to well known Beatles tunes could be heard before Dr Timmis began his illustrated lecture.

He was introduced by Chairman, Trevor Davies, *"Today, Ben steps aside from his role as a committee member of the Emsworth Maritime & Historical Trust to open a window on the high-tech world in which he worked for more than 40 years"*. As a consultant radiologist Ben Timmis has worked in various London hospitals and is currently Medical Director and NHS Responsible Officer, 4Ways Health Care Ltd (A UK Tele-Radiology Company).

A CT (computerized tomography) scan combines a series of X-ray images taken from different angles around the body and uses computer processing to create cross-sectional images (slices) of the bones, blood vessels and soft tissues inside the body. CT scan images provide more-detailed information than do plain X-rays.

X-rays were first discovered by Röntgen in 1895. Each one produces a 2 dimensional image, for example of the lungs, where the internal organs are superimposed. A CT scanner will show a cross section of all the organs. Medical practitioners can see a lot more with a CT scan but nevertheless the X-ray is still a useful tool and 1,500,000 are performed in the UK each year.

In 1971 the first practical CT scanner was developed by British electrical engineer Godfrey Hounsfield and his team building on the theoretical work of South African, Allan Cormack. The two men won a Nobel Prize in 1979 for their part in this amazing leap forward in medical analysis. CT is a diagnostic tool that has formed a major part of Dr Ben Timmis' working life.

The first scanner was installed in Atkinson Morley Hospital and its use around the world has escalated since then. Scanner appeals were launched to get the equipment installed in various hospitals around the country. Today we are 27th in the list after Lithuania. There are three planes of construction

available: Axial, Coronal and Sagittal to enable the radiologist to build up a comprehensive image of the body's interior. This enables rapid diagnosis of many problems.

Dr Timmis described in detail how the scanner works and showed various images of real life CT scans pointing out anomalies in the tissues.

How were the Beatles involved?

Well in the late 60s/early 70s the economic and political outlook in the UK was catastrophic but it was also the time of hippies, the summer of love and the Beatles. Total sales of Beatles records in the years 1963-68 reached 200 million generating great profits for their record company, EMI. Some of those monies were invested in new products including, crucially, the CT scanner. This was a catalyst enabling the development of the scanner which is, arguably, one of the 20th centuries greatest medical inventions.

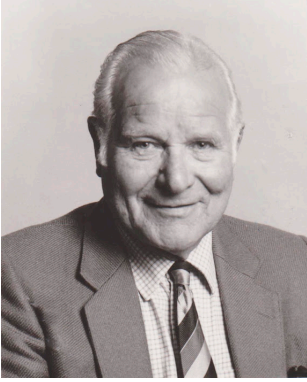
The evening ended as always with a question and answer session and the drawing of the raffle.

Treasure Hunt

This year the Summer Treasure Hunt will be on Wednesday 26th June, starting around 7.00pm. Teams of up to four walkers will follow a route round Emsworth, guided by written instructions. There will be a number of questions to be answered on the way. The winning team will be awarded with a modest prize and invited to compile the route and questions for next year. This is NOT obligatory. Open to all families, groups, couples and individuals (who must have a unique team name!)

Gordon Braddock

The Life of Ken Wood, 1916-1997



Ken Wood

The life of Ken Wood and his involvement in the Kenwood Company was the theme of the April 4th talk in the Emsworth Community Centre. John Wood was an eloquent speaker who entertained his audience with tales of his stepfather's amazing life. John's illustrated talk included video clips and recordings made by Ken Wood.

Ken developed his entrepreneurial spirit at school and recalled them:

"I remember we had a mistress teaching French and 'um' she wasn't very good so I used to hop out the window during French lessons, buy some Walls ice creams for a penny a time and come back and sell them for a penny halfpenny a time."

In 1930, aged only 14, Ken decided to leave school and join the Merchant Navy. He served for five years, during which time he travelled the world. He continued as a wheeler dealer.

"I found, almost on my first trip to Rotterdam, that I could buy tobacco (I did not smoke then!), so I bought it, and when the sailors ran out, I sold it to them at a price. I also found that leather goods in the Argentine would fetch a good price in the UK."

One of Ken's first jobs after leaving the Merchant Navy was working for a company that sold American radios and car radios but he wanted his own company. On leaving, he built himself a radio set, acquired a bicycle and managed to scrape together £50. Another £50 was supplied by a young friend called Dickson and so

"by the time I was 21, I had started my 50/50 partnership in my own company."

In the early days, to make the company look bigger than it was, Ken would often deliver orders wearing his brown overall as the 'delivery boy', then back at the van, he would change into his smart jacket to do the paperwork with the customer, as 'the manager'!

During World War II, Ken worked as a research engineer on radar and gunnery training. He disposed of his first company and set up a new one in peacetime. The new business was called Woodlau, which Ken and Roger Laurence established at 79 Goldsworth Road, Woking, initially making electric turnover toasters. The range soon expanded, the company grew and in September 1948 they moved into a factory in Hipley Street, Woking, where they remained until 1962, becoming the town's biggest employer at the time with 700 staff. The company then moved down to New Lane in Havant. Roger Laurence had left the business in 1949 and thereafter it had become the Kenwood Manufacturing Company Ltd.

The new company's most well-known product was the Kenwood Chef. After a decade of the original Kenwood Chef, the A700, being in production Ken decided it was time to give it a facelift, and so he hired a young industrial designer by the name of Kenneth Grange who designed the iconic makeover.

In 1968, Ken received a takeover offer for the company that he could not refuse. Kenwood was bought out by Sir Jules Thorn. Kenwood is still going strong but what happened to Ken? He started another successful company in Havant, Dawson Keith, who manufactured electric generators. This company won the Queen's Award for Export.

When Ken died on 19th October 1997, an obituary in *The Daily Telegraph* read:

"The man who gave his name to the Kenwood Chef, mainstay of eight million kitchens."



Some of the staff at New Lane, Havant



Barmy in Wonderland when the Cheshire Cat met the Newt

Readers of the latest *Emsworth Echo* will know of the research done by Sarah Stanfield into the writing talents of both P G Wodehouse and Lewis Carroll. For Emsworth and the Oyster Industry debacle those talents manifested themselves in the poem 'Avenged!', the Wodehouse parody of the demise of the Walrus and the Carpenter by Lewis Carroll.

Sarah's talk 'Barmy in Wonderland when the Cheshire Cat met the Newt' given in the Emsworth Community Centre on 7th March gave an insight into the lives and writing careers of both Plum (P G) and Lewis Carroll and how they occasionally overlapped. Even before her illustrated talk began the audience were treated to an onscreen 'amuse bouche' of quotes as they settled into their seats.

As Sarah pointed out Lewis Carroll was a very influential Victorian writer particularly of children's literature. By the time the author died in 1898 MacMillan had printed 150,000 copies of *Alice in Wonderland* and 100,000 copies of *Through the Looking Glass*. Sales of *Wonderland* began slowly and steadily, and then began to spiral upwards. Foreign language editions of both books were published, and next to the Bible and Shakespeare, they continue to be two of the most quoted and translated books.

So what were the crossovers between the authors' lives and work that convinced Sarah that Plum drew inspiration from Carroll? Without doubt, they are both authors who provide comfort, nostalgia and escapism in abundance – the Alice novels were taken to the trenches by soldiers of the First World War (both German and English) and to the Antarctic by Plum's classmate, Ernest Shackleton; and Wodehouse novels were enjoyed by readers during the Second World War, and were serialised aplenty during the recent Covid lockdowns. They both had a light and often humorous touch in their writings.

However they both lived rarified lives in many ways, without the filters and mirrors that could have saved



Sarah Stanfield

them so much distress. Both men sometimes acted naively – but Carroll was not inappropriate in his relationships with children, and Plum was no traitor to his country.

Sarah finished her talk with a quote from writer, Robert McCrum, who said '*there are two lasting themes in the lives of great writers, love and work*'. Both Carroll and Plum had those attributes in abundance, which is why they both endure.

In conclusion, Chairman Trevor Davies thanked Sarah for a thoroughly engaging and memorable talk. Commenting on her researches he added "You have turned over and looked under stones that the rest of us had not really thought to notice. Your research has highlighted three practical features:

1. In 1902, a report of a Government Inspector was completed and published within three months of the event occurring – unheard of today.
2. The Emsworth Oyster industry crisis must have been national, not just local, news. Otherwise Plum's parody would not have been published in *Punch* which had a national circulation.
3. 120 years later we are still wrestling with the problem of sewage in the harbour."

The views expressed by contributors to this Newsletter do not necessarily reflect those of the General Committee. All rights are reserved. Please contact the editor for permission to use any material.

Hon. Secretary: Dorothy Bone
01243 373780
dorothybone@btinternet.com

Membership: Shelagh Standen
shelaghstanden@gmail.co.uk

Website: www.emsworthmuseum.org.uk Newsletter Editor: Christine Bury
01243 377870 cmbury21@gmail.com

If you would like to provide a news article or illustration, please send it to the editor, preferably on disk or by email.

Printed by SRP Design & Print, Leigh Road, Chichester, PO19 8TU Tel: 01243 782988

© Emsworth Maritime & Historical Trust