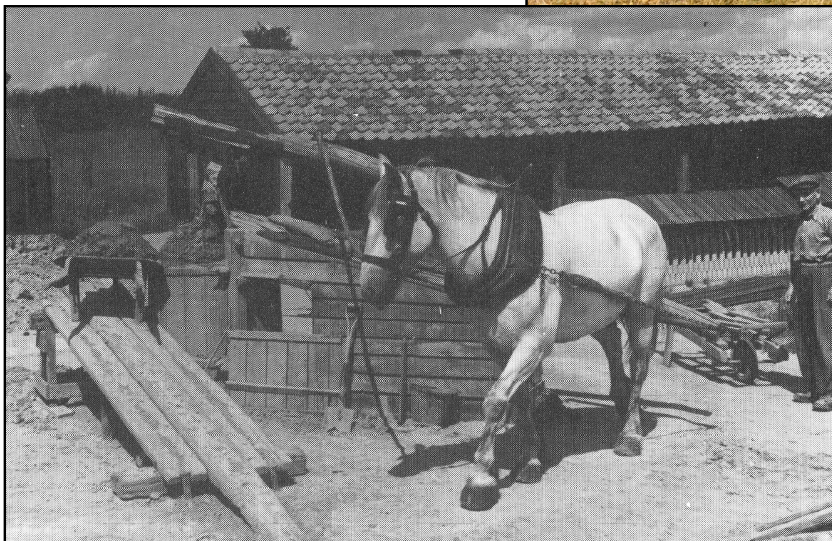


# 1. Preparing the clay

A graft is used to dig out the clay – see marked exhibit.

The word graft comes from the Norse word “groftr” – digging. It gave us the expression “hard graft”. A graft is the amount of clay a man can dig and throw in one move. As clay was heavy, the spades used for digging were narrower than usual. It was still very hard work.

Clay has been dug out. It needs to be well watered and mixed with a fine ash in a pugmill before it can be used for brickmaking.



Picture courtesy Noel Pycroft

This is a Horse driven pugmill in Suffolk. It is very similar to the one that used to be in Slipper Road.

Picture from Martin Hammond, *Bricks and Brickmaking*. Shire Publications 1990

- These two cottages were built on the site of Emsworth's pugmill in Slipper Road.
- The circle of clay compressed by the horse as it walked round was used for the foundations.
- The cottages have long since been demolished. The redeveloped site is now known as Roundhouse Meadow.

