

Medmerry Managed Retreat

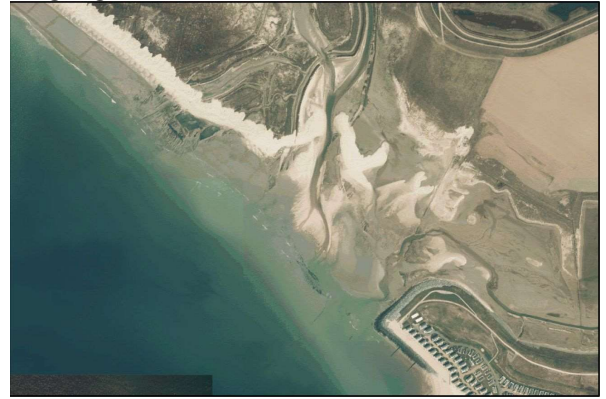
Between 2010 and 2013 the coastal defences at Medmerry, west of Selsey Bill, were realigned to help reduce the impact of flooding in more populated areas. Professional archaeological investigation on the landward side of the then sea wall produced a series of discoveries including evidence of significant Bronze Age and Medieval activity.

It was anticipated that subsequent coastal change would reveal further deposits of interest, so, in 2014, with the support of the Environment Agency and Archaeology South East (ASE), CDAS established a regular monitoring program.

2007



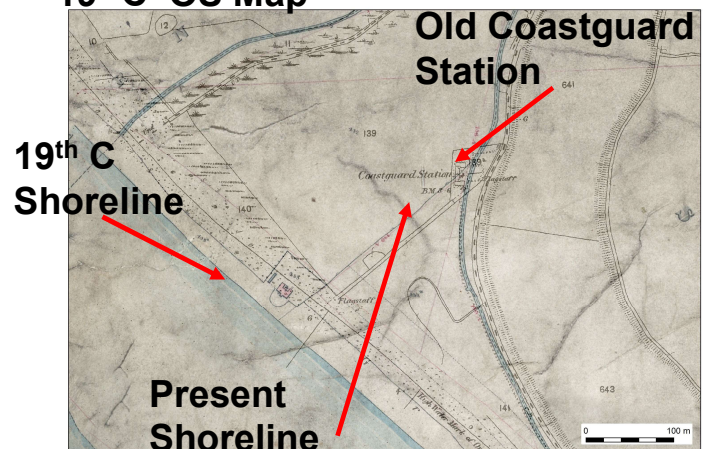
2020



8 years on, the shoreline is almost unrecognisable and a range of features have been revealed. Many of these have now disappeared. Erosion was also a problem in the past. See 19th Century map.



19thC OS Map



In the photo above the sea has cut through the original land surface revealing a layer of burnt flint. Concentrations of burnt flint were revealed along much of the shore. They represent places where large quantities of fresh water were heated for some purpose during the Bronze Age.