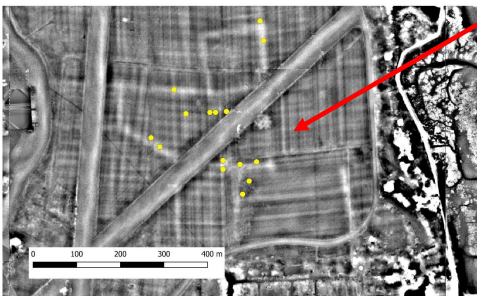
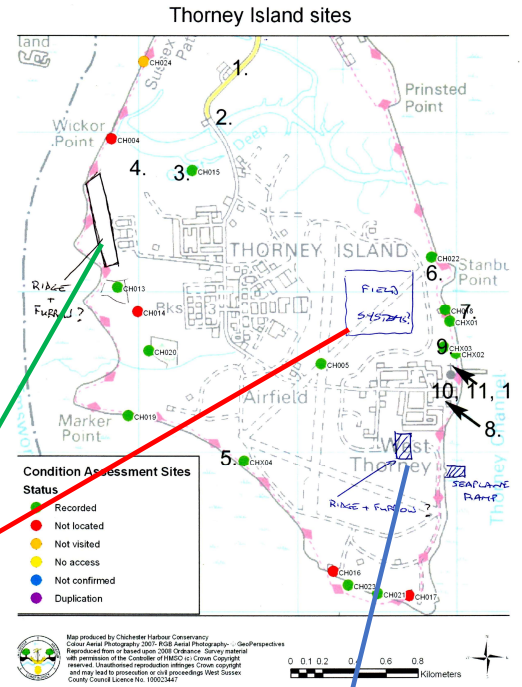




Thorney – Field Systems

Light Detection And Ranging (LiDAR) technology accurately measures distance and optical characteristics. It can be used to map the ground surface. However, it is necessary to walk the area (Ground Proofing) to confirm the nature of the features.

LiDAR “maps” are publicly available on-line & the data can be viewed in number of formats. A review of Thorney LiDAR data identified three locations where ridges and/or ditches indicated the possible presence of historic Field Systems (see sketch map).



SLRM representation of the Lidar of the airfield showing historic Field Systems.
GPS Positions of human markers added

Ridges near the runway are only about 0.2m high so difficult to identify. GPS readings (marked in yellow) were taken when it appeared someone reached the crest of a ridge. Many field systems correctly identified but many missed and also false readings.

The features at both the Western Shore & South of West Thorney Village are much more distinct. They resemble medieval Ridge & Furrow. Rare in this area so recorded on HER database.

